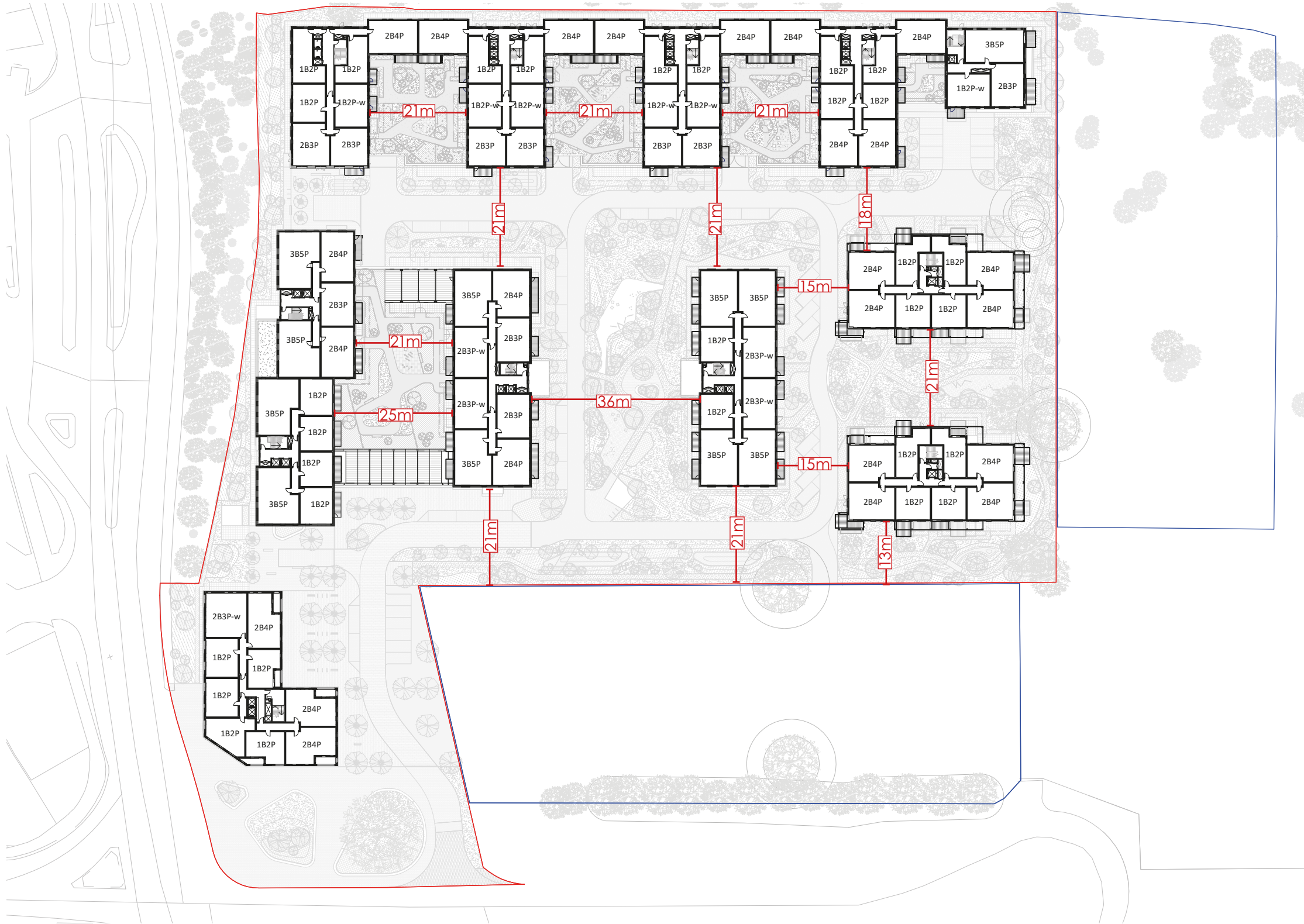


APPENDIX  
SETTING OUT DISTANCES



# CONCLUSION

## WHEELCHAIR APARTMENTS

### 1B2P WHEELCHAIR UNIT 63.8 sqm

Space standards compliant with:

**Housing SPG**

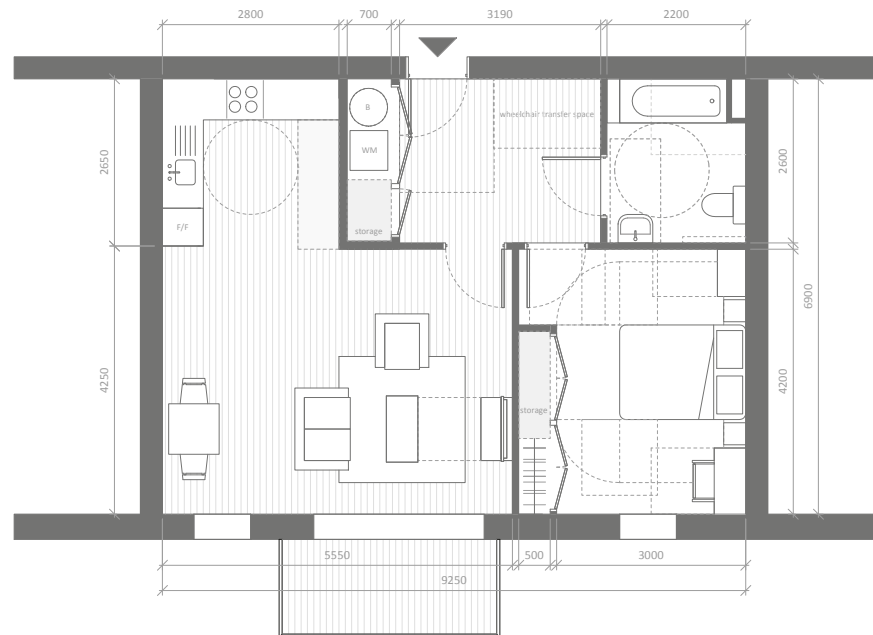
- Private Amenity
  - Minimum area 5 sqm
  - Minimum depth 1500 mm

Internal layout compliant with:

**AD M Cat 3b**

- Minimum combined living/dining/kitchen area 25 sqm
- Minimum kitchen length 6130 mm
- Minimum principal bedroom area 13.5 sqm
- Minimum general storage area 1.5 sqm
- Wheelchair transfer space 1100x1700 mm
- Minimum required furniture
- Minimum required activity zones

- Single aspect unit
- Proposed living / dining / kitchen area 30.8 sqm
- Standard ColladoCollins kitchen (Type W1) 2800 x 2650 mm
- Proposed bedroom 1 size (double) 14.0 sqm
- Standard wheelchair bathroom 2600 x 2300 mm
- Proposed general storage provision 1.5 sqm
- Balcony size 5.0 sqm
- Minimum utility cupboard provision 1600 x 700 mm (including washing machine)



### 2B4P WHEELCHAIR UNIT 86.3 sqm

Space standards compliant with:

**Housing SPG**

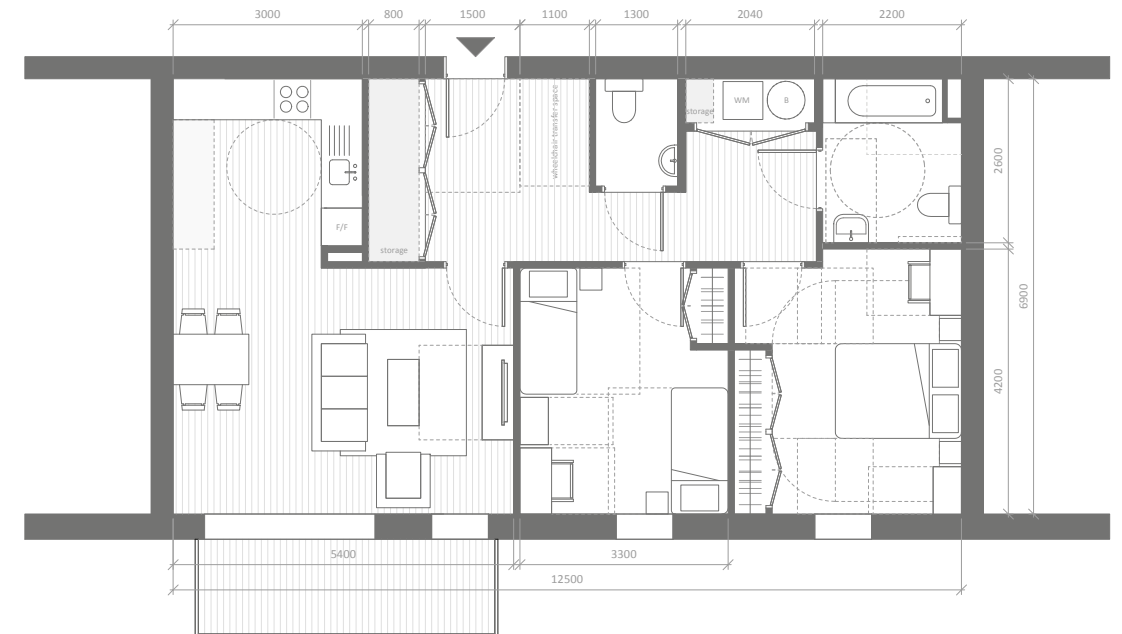
- Private Amenity
  - Minimum area 7 sqm
  - Minimum depth 1500 mm

Internal layout compliant with:

**AD M Cat 3b**

- Minimum combined living/dining/kitchen area 29 sqm
- Minimum kitchen length 6530 mm
- Minimum principal bedroom area 13.5 sqm
- Minimum double bedroom area 12.5 sqm
- Minimum general storage area 2 sqm
- Wheelchair transfer space 1100x1700 mm
- Minimum required furniture
- Minimum required activity zones

- Single aspect unit
- Proposed living / dining / kitchen area 30.1 sqm
- Standard ColladoCollins kitchen (Type W2) 3000 x 2650 mm
- Proposed bedroom 1 size (double) 14.7 sqm
- Proposed bedroom 2 size (double) 12.9 sqm
- Standard wheelchair bathroom 2600 x 2200 mm
- Proposed general storage provision 2.6 sqm
- Balcony size 7.0 sqm
- Minimum utility cupboard provision 1600 x 700 mm (including washing machine)



### 3B5P WHEELCHAIR UNIT 102.1 sqm

Space standards compliant with:

**Housing SPG**

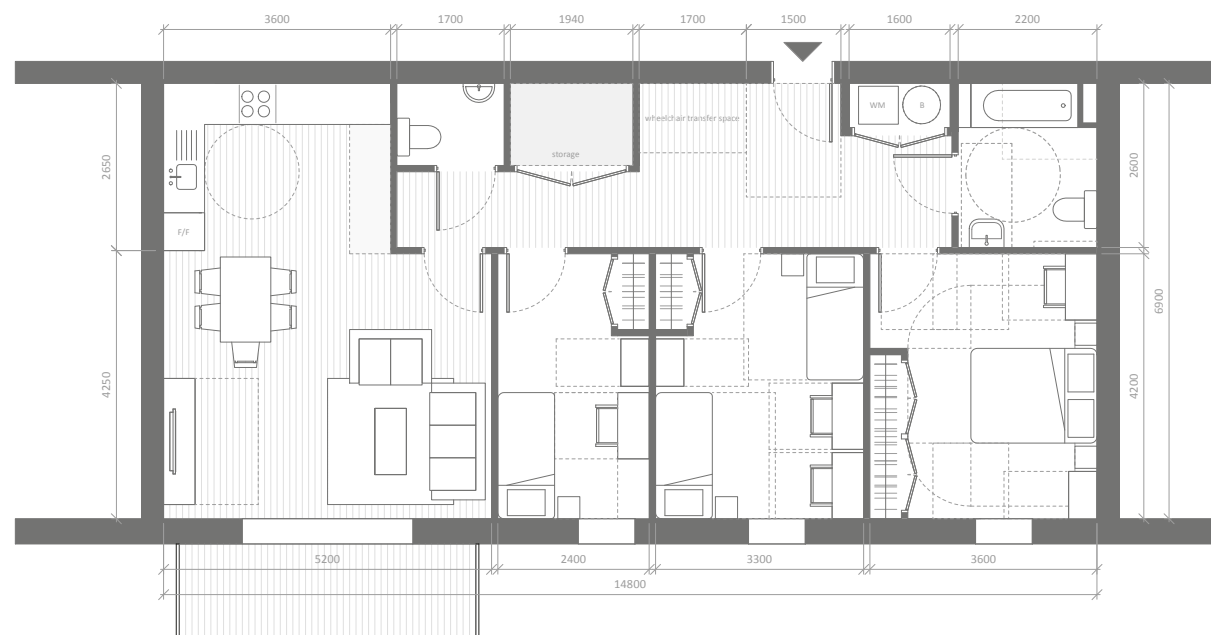
- Private Amenity
  - Minimum area 8 sqm
  - Minimum depth 1500 mm

Internal layout compliant with:

**AD M Cat 3b**

- Minimum combined living/dining/kitchen area 31 sqm
- Minimum kitchen length 7430 mm
- Minimum principal bedroom area 13.5 sqm
- Minimum double bedroom area 12.5 sqm
- Minimum single bedroom area 8.5 sqm
- Minimum general storage area 2.5 sqm
- Wheelchair transfer space 1100x1700 mm
- Minimum required furniture
- Minimum required activity zones

- Single aspect unit
- Proposed living / dining / kitchen area 31.6 sqm
- Standard ColladoCollins kitchen (Type W3) 3600 x 2650 mm
- Proposed bedroom 1 size (double) 15.1 sqm
- Proposed bedroom 2 size (double) 13.9 sqm
- Proposed bedroom 3 size (single) 10.1 sqm
- Standard wheelchair bathroom 2600 x 2200 mm
- Proposed general storage provision 2.5 sqm
- Balcony size 8.0 sqm
- Minimum utility cupboard provision 1600 x 700 mm (including washing machine)



# HILLINGDØN GARDENS

Design and Access Statement - September 2019